



*A refurbished, sustainable Steinberg Rink and building will enable passive recreation and dynamic activity in all seasons.*

Imagine a place for everyone in every season. Skaters. Cyclists. Diners. Nature lovers. First-time visitors. Explorers of every age. Those looking to experience joy and community. The Glade has something to offer each visitor.

- **A revitalized eastern end of Forest Park:** Designed to harmonize with nearby waterways, prairies and woodlands, the Glade will feature 22.5 acres of year-round opportunities for relaxation and fun.
- **A place for activity in all seasons:** Ice skating and roller skating, festivals and markets, classes and concerts, special occasions and everyday celebrations. The Glade will allow for endless opportunities, all year long.
- **Improved access to the Park:** A fully accessible, wooded path will lead to the Glade and intersect with the future Brickline Greenway, which will connect Forest Park to downtown St. Louis, the Gateway Arch, Fairground Park and Tower Grove Park.



Learn more at [forestparkforever.org/imagine](https://forestparkforever.org/imagine).

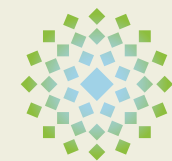
Non-Profit Org.  
U.S. Postage  
**PAID**  
St. Louis, Mo  
Permit No. XXXX



5595 Grand Drive in Forest Park  
St. Louis, Missouri 63112



JOIN US AS WE  
Imagine the Glade



Imagine the Glade

*An all-season vision for Steinberg  
and eastern Forest Park*

## Imagine the Glade

We're excited to share with you our progress on the Glade, an all-season vision for Steinberg Rink and eastern Forest Park. Set to open in late 2026, this \$100 million project will transform a less visited section of the Park and limited-use ice rink into a multipurpose destination for year-round activity in harmony with the natural features surrounding it.

Design of the Glade took four years and incorporated feedback from more than 6,000 members of our community. Together, we've envisioned a place where everyone can see themselves in Forest Park.

We're grateful to the enthusiastic and generous early supporters who helped us begin construction in time to meet an ambitious goal of reopening for ice skating in late 2026. There are still exciting opportunities for you to join us in shaping Forest Park's next great destination!





## Introducing the Kemper Family Commons

The Kemper Family Commons will be the heart of the renovated building. Once simply a spot to lace up skates, it will now be a destination: an all-seasons hub of activity and a comfortable space made for lingering.

The Commons is where visitors will shake off the cold in winter, beat the heat in summer and fuel up for their Forest Park adventures in all seasons. It will be an end point and an entryway to a completely reimagined Forest Park experience.

The Kemper Family Commons is one of the many exciting new spaces and amenities we look forward to sharing with you in the coming months.

## Imagine an All-New Steinberg

Family-friendly amenities at the new Steinberg facility include multiple shade structures and an interactive water feature with splash pad and fountains during warm weather. In cooler months, outdoor fire pits and an indoor fireplace will create cozy gathering places for ice skaters and observers alike.

The second floor houses a community living room for group activities and a wholly reimagined rooftop terrace with dining options and expansive Park views.

The first floor will feature an all-new rink-side café, reservable rooms for family and community events and the Kemper Family Commons.



**“A once-in-a-lifetime chance to rethink eastern Forest Park and what it can do for our community.”**



The William T. Kemper Family Foundation has committed an early lead gift to help bring to life the Glade, where nature and the built environment will merge seamlessly and invite visitors to enjoy the Park. But this project isn't just about renovating a beloved facility. It creates an instantly essential community asset that reimagines how we engage with 22.5 acres of Forest Park.

“We know the opportunity here is so much bigger than restoring a historic building and ice rink,” says John Kemper, reflecting on his family’s enthusiastic support for the Glade. “This was a once-in-a-lifetime chance to rethink the east end of Forest Park, how it ties to the surrounding neighborhoods and what it can do for our community. Just as Forest Park Forever and the City reimagined other features in Forest Park that people now see as signature elements of St. Louis—places like Art Hill, the Jewel Box, the Boathouse—we’re doing that here. And we can’t wait to see it come alive.”

## Construction Progress

After breaking ground in early 2025, we’re on track to welcome visitors to the Glade by the end of 2026, starting with the return of ice skating to Steinberg Rink this winter.

Last year, the construction focused on foundational work, removing the original limestone veneer for refurbishment, excavating the hillside, installing a state-of-the-art ice system, drilling wells for the award-winning geothermal system, pouring the foundation of the water feature and more. In early 2026, crews placed the final steel beams forming the ceiling of the first story and erected the all-new second story, which will house the rooftop terrace, dining and community living room.



Check out all construction updates at [forestparkforever.org/glade-construction](https://forestparkforever.org/glade-construction).



# LETTER FROM THE PRESIDENT



Can you believe it's already been over a year since we played our first basketball games in Forest Park? Your dedication and generosity helped transform underused turf and asphalt into a vibrant community gathering place.

Since opening in July 2024, the Nicholas J. Booker Basketball Courts have seen daily use. But Forest Park Forever staff continue to add features and think of ways to bring even more people to the space. Because you

helped make the courts happen, **we're giving you a sneak peek into these exciting plans!**

You may have heard about the racquetball court mural that will add even more color and energy to the area. We're also organizing regular game meetups, movie and basketball streaming nights, coaching clinics, and other programs in coordination with the City of St. Louis. **Keep up with the latest on our website!**

With gratitude,

**Lesley S. Hoffarth, P.E.**  
President and Executive Director  
Forest Park Forever



Scan to learn more about  
the Nicholas J. Booker  
Basketball Courts in Forest Park

[forestparkforever.org/basketball](https://forestparkforever.org/basketball)

Non-Profit Org.  
U.S. Postage  
**PAID**  
St. Louis, Mo  
Permit No. XXXX



Dennis & Judith Jones  
Visitor and Education Center  
5595 Grand Drive in Forest Park  
St. Louis, Missouri 63112



**NICHOLAS  
J. BOOKER  
BASKETBALL  
COURTS**

[forestparkforever.org/basketball](https://forestparkforever.org/basketball)



## NICHOLAS J. BOOKER BASKETBALL COURTS



# You helped bring basketball to Forest Park. What's next?



Retired NBA champion David Lee hosted a skills clinic at The Nick on Sept. 12, 2024.



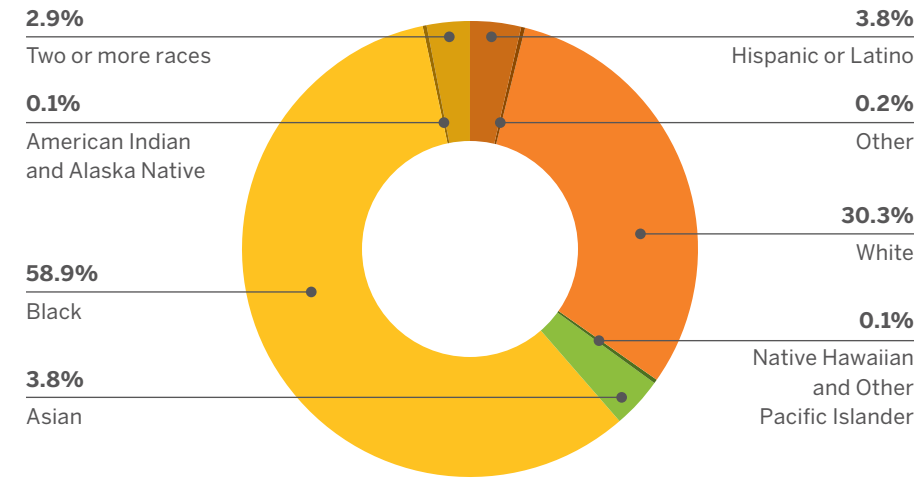
# Nicholas J. Booker Basketball Courts

## “THE NICK” STATS

For years, basketball was one of the most requested additions to Forest Park. And as expected, The Nick has become a popular destination, bringing together players from throughout the region. With friends like you, we'll continue to attract a diversity of visitors, build our basketball community and create new ways to experience Forest Park.



### USER DEMOGRAPHICS



### USE OF THE SPACE

#### Before the Courts

NUMBER OF VISITS

# 432

(July 2023–June 2024)

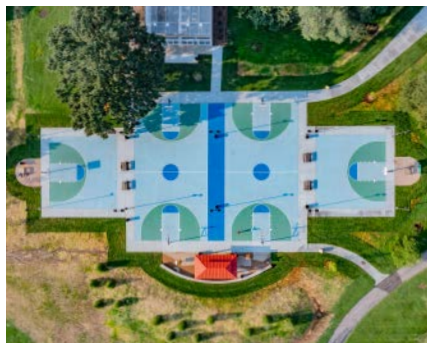


#### After the Courts

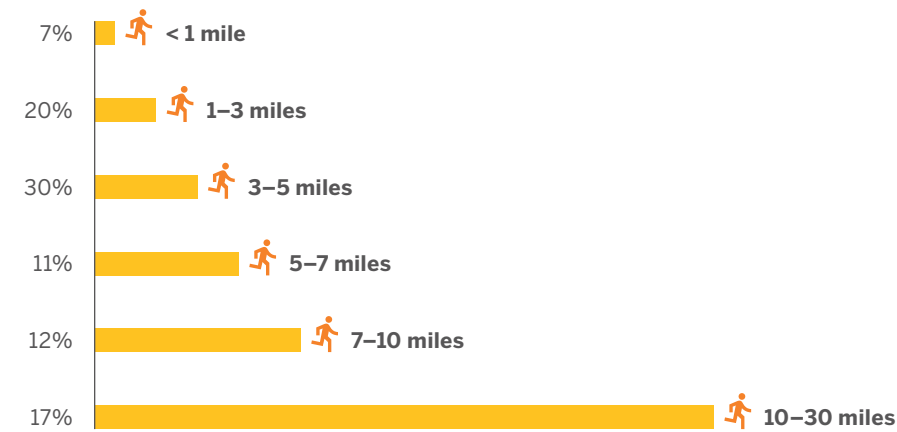
NUMBER OF VISITS

# 9,200

(July 2024–June 2025)



### USER MILEAGE TO THE COURTS



NUMBER OF BASKETBALLS LOANED  
**425 Basketballs**

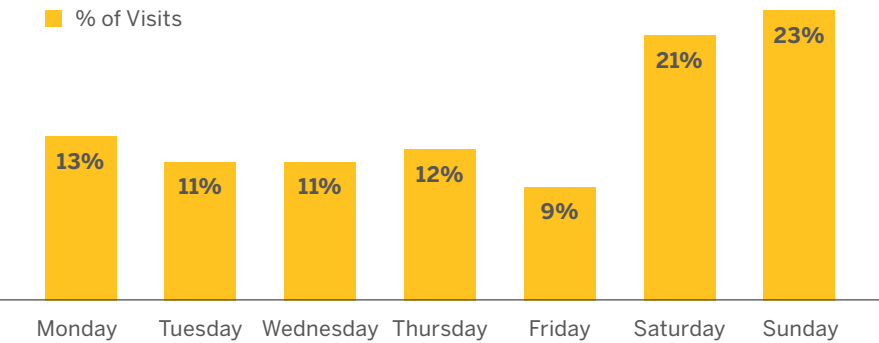


AVERAGE AMOUNT OF TIME AT THE COURTS

# 85 Minutes



### USE BY DAY OF THE WEEK



### What's Next for The Nick?

- Nearby **3,000+ sq. ft. mural** expected to be completed next spring
- **Kids' programs** in partnership with the City of St. Louis and local organizations
- Movie and basketball **watch parties**
- **Coaching** clinics
- And more to be announced!



Data as of June 2024